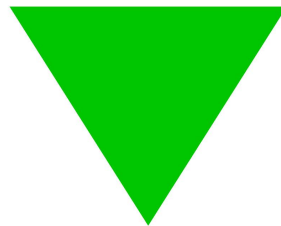


Pin-Female Header Connectors 1.0 mm

TOPTEK®

HARDWARE ELECTRONIC MANUFACTURER

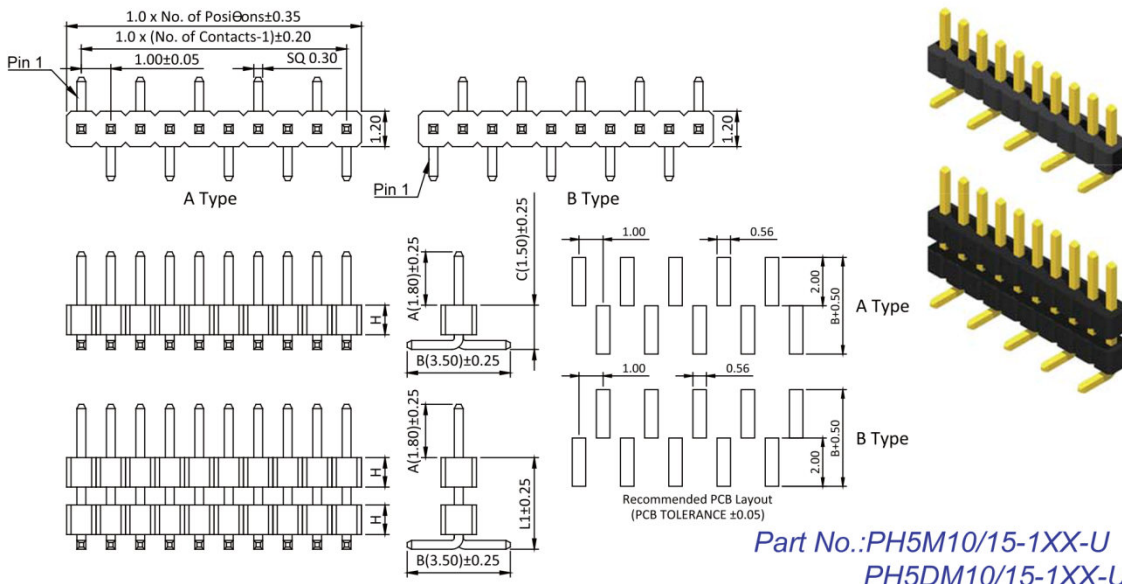


www.toptek-co.com

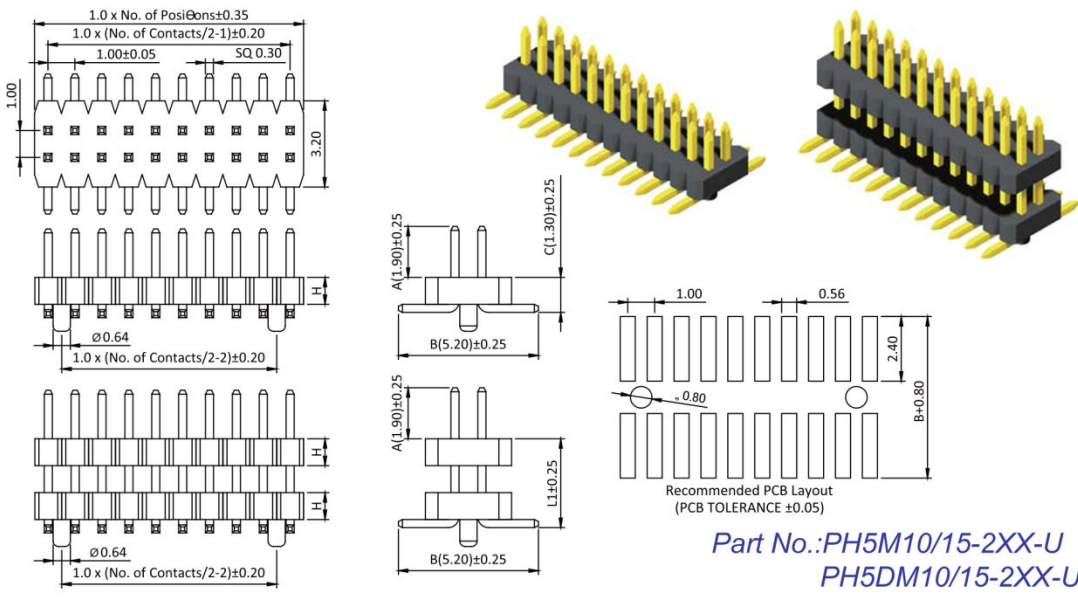
TOPTEK srl
10015 - IVREA (TO) - ITALY
tel. +39 0125 251 211 - fax +39 0341 367 607
info@toptek-co.com

2
*
5

Pin Header 1.0mm 1 Row H=1.0/1.5mm SMT / Stack SMT Type



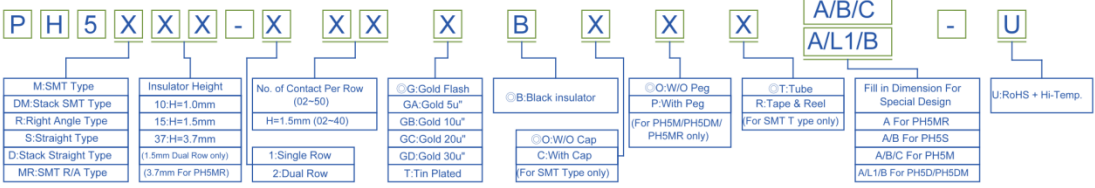
Pin Header 1.0mm 2 Row H=1.0/1.5mm SMT / Stack SMT Type



Specifications
 Current Rate: 1 AMP
 Insulation Resistance: 1000M Ω Min.
 Contact Resistance: 20m Ω Max.
 Dielectric Voltage: 500V AC for one minute
 Operation Temperature: -40°C to +105°C

Material
 Insulator: Hi-Temp. Thermoplastic, UL 94V-0
 Terminal: Copper Alloy
 Plating: Gold Plated

ORDER INFORMATION



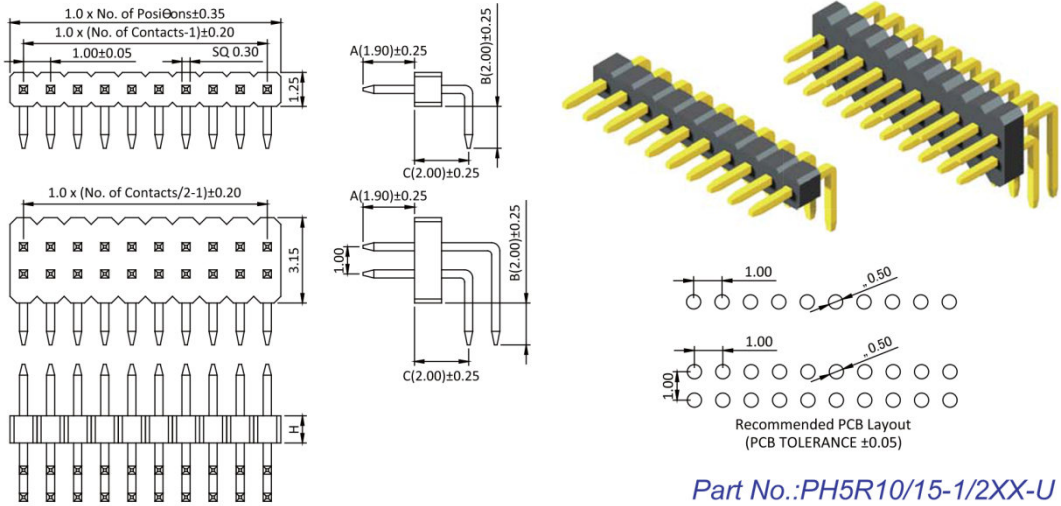
Ⓞ: Standard Recommend

CONNECTOR MANUFACTURERS

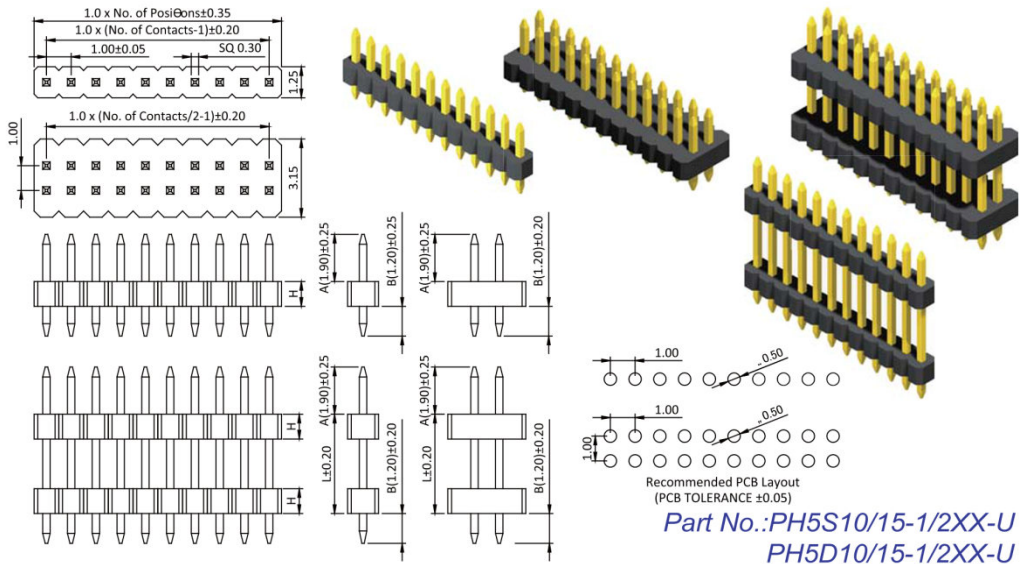
TOPTEK®
HARDWARE ELECTRONIC MANUFACTURER

www.toptek-co.com

Pin Header 1.0mm 1 & 2 Row H=1.0/1.5mm Right Angle Type



Pin Header 1.0mm 1 & 2 Row H=1.0/1.5mm Straight / Stack Straight



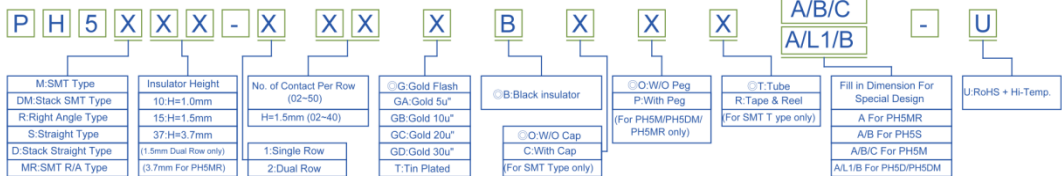
Specifications

Current Rate: 1 AMP
Insulation Resistance: 1000MΩ Min.
Contact Resistance: 20mΩ Max.
Dielectric Voltage: 500V AC for one minute
Operation Temperature: -40°C to +105°C

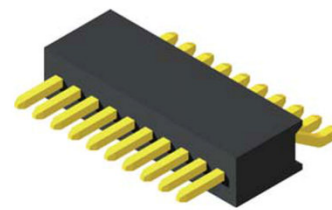
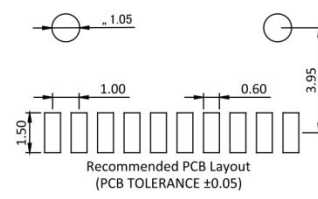
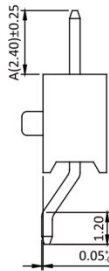
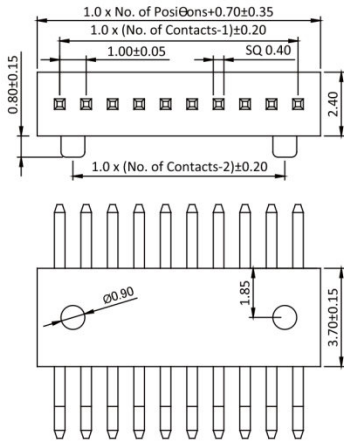
Material

Insulator: Hi-Temp. Thermoplastic, UL 94V-0
Terminal: Copper Alloy
Plating: Gold Plated

ORDER INFORMATION



Pin Header 1.0mm 1 Row H=3.7mm SMT R/A Type



Part No.: PH5MR37-1XX-U

2
*
7

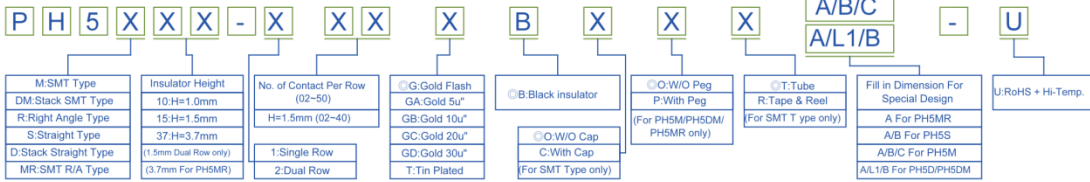
Specifications

- Current Rate: 1 AMP
- Insulation Resistance: 1000MΩ Min.
- Contact Resistance: 20mΩ Max.
- Dielectric Voltage: 500V AC for one minute
- Operation Temperature: -40°C to +105°C

Material

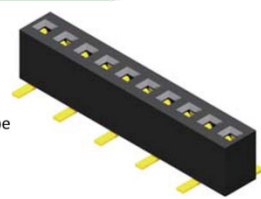
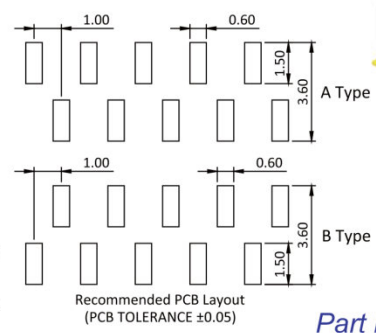
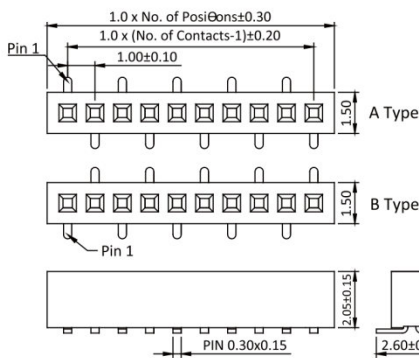
- Insulator: Hi-Temp. Thermoplastic, UL 94V-0
- Terminal: Copper Alloy
- Plating: Gold Plated

ORDER INFORMATION



Standard Recommend

Female Header 1.0mm 1 Row H=2.1mm SMT Type



Part No.: PS5M21-1XX-U

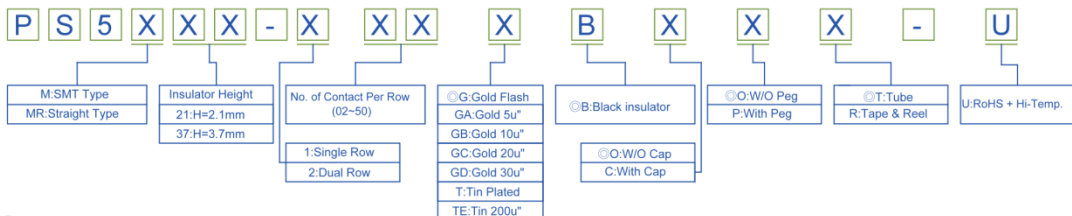
Specifications

- Current Rate: 1 AMP
- Insulation Resistance: 1000MΩ Min.
- Contact Resistance: 20mΩ Max.
- Dielectric Voltage: 500V AC for one minute
- Operation Temperature: -40°C to +105°C

Material

- Insulator: Hi-Temp. Thermoplastic, UL 94V-0
- Terminal: Copper Alloy
- Plating: Gold Plated

ORDER INFORMATION



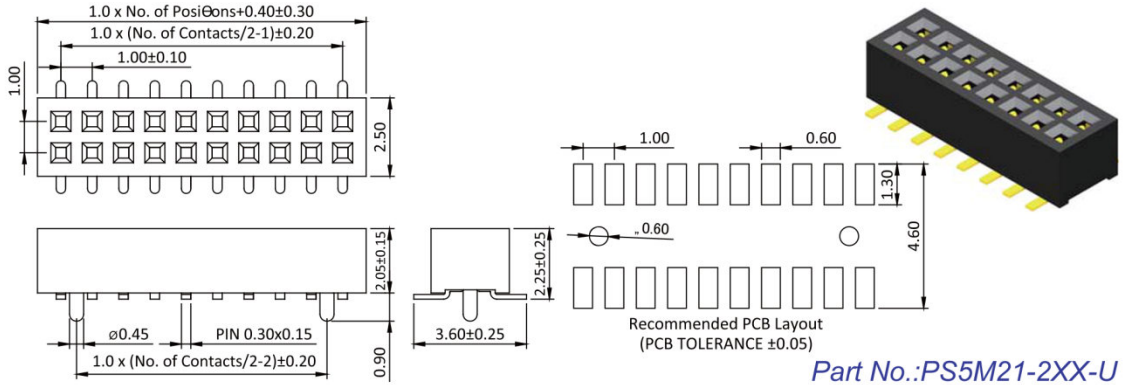
Standard Recommend

CONNECTOR MANUFACTURERS

TOPTEK®
HARDWARE ELECTRONIC MANUFACTURER

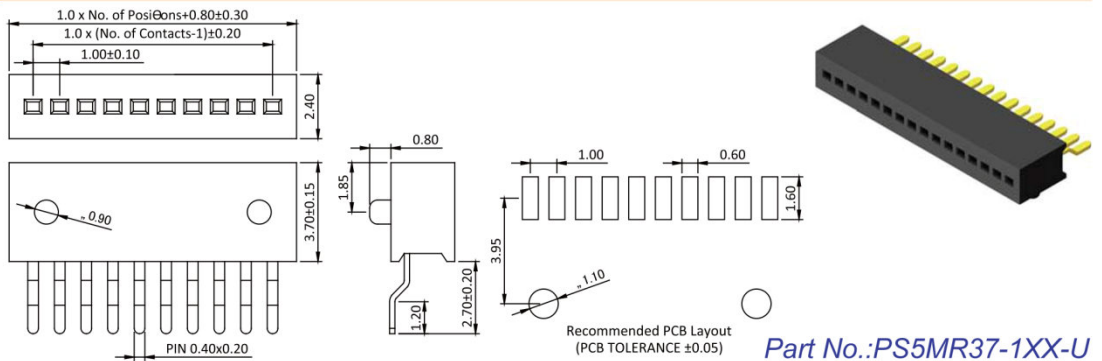
www.toptek-co.com

Female Header 1.0mm 2 Row H=2.1mm SMT Type



Part No.:PS5M21-2XX-U

Female Header 1.0mm 1 Row H=3.7mm SMT R/A Type



Part No.:PS5MR37-1XX-U

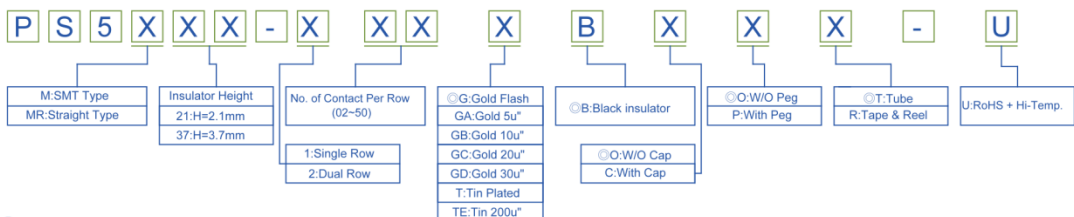
Specifications

Current Rate:1 AMP
Insulation Resistance:1000MΩ Min.
Contact Resistance:20mΩ Max.
Dielectric Voltage:500V AC for one minute
Operation Temperature:-40°C to +105°C

Material

Insulator:Hi-Temp. Thermoplastic, UL 94V-0
Terminal:Copper Alloy
Plating:Gold Plated

ORDER INFORMATION



◎:Standard Recommend

www.toptek-co.com

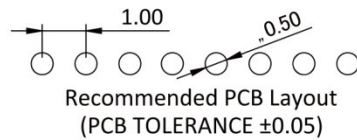
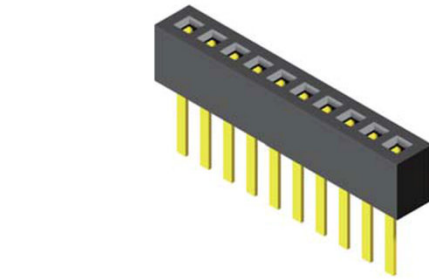
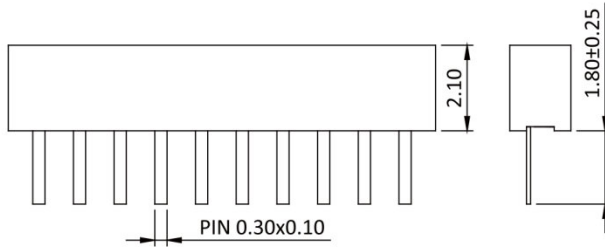
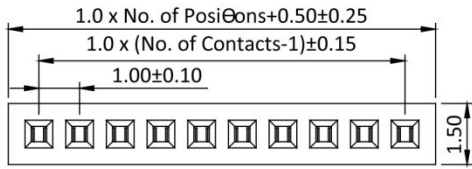
info@toptek-co.com

2 * 8

P in-Female Header 1.0 mm

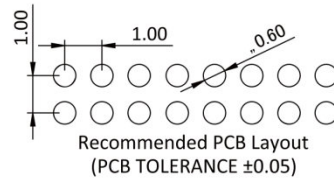
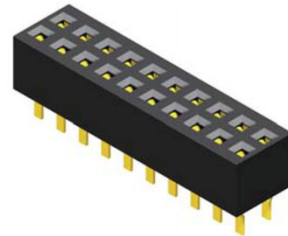
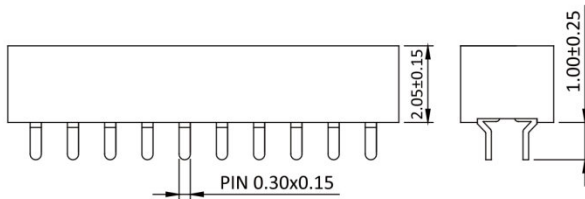
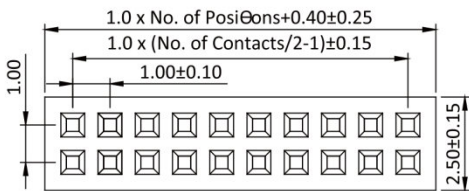
ROHS

Female Header 1.0mm 1 Row H=2.1mm Straight Type



Part No.:PS5S21-1XX-U

Female Header 1.0mm 2 Row H=2.05mm Straight Type



Part No.:PS5S21-2XX-U

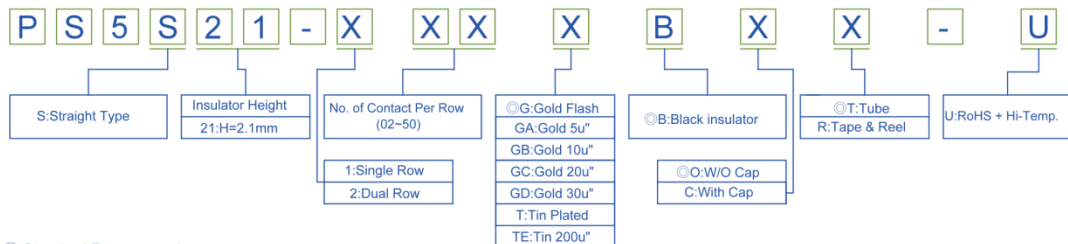
Specifications

Current Rate:1 AMP
Insulation Resistance:1000MΩ Min.
Contact Resistance:20mΩ Max.
Dielectric Voltage:500V AC for one minute
Operation Temperature:-40°C to +105°C

Material

Insulator:Hi-Temp. Thermoplastic, UL 94V-0
Terminal:Copper Alloy
Plating:Gold Plated

ORDER INFORMATION



Ⓢ: Standard Recommend